

Academic Facilities



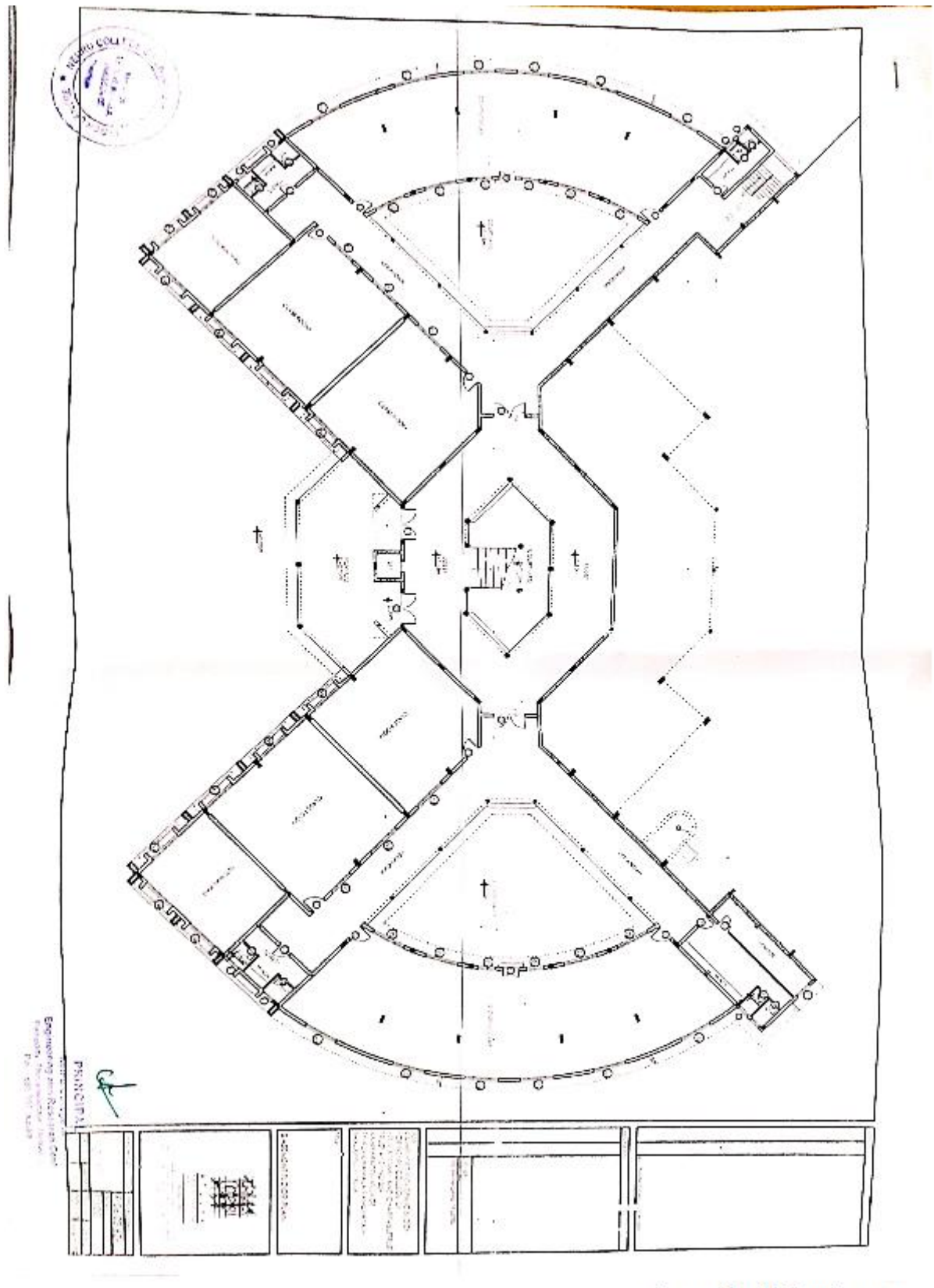
Table of Contents

<u>SL. No.</u>	<u>Title</u>	<u>Page No.</u>
1	<u>Building Plan</u> ❖ <u>Aryabhatta Block</u> ❖ <u>Bhaskara Block</u> ❖ <u>Kapila Block</u> ❖ <u>Varahamihira Block</u> ❖ <u>Brahmagupta Block</u>	2 3 4 5 6 8
2	<u>Academic Blocks</u> ❖ <u>Aryabhatta</u> ❖ <u>Bhaskara</u> ❖ <u>Kapila</u> ❖ <u>Varahamihira</u>	9 10 11 12 13
3	<u>Classrooms</u>	14
4	<u>Seminar Halls</u>	15
5	<u>Laboratories</u>	16
6	<u>Smart Classrooms</u>	17
7	<u>Central Library</u>	18

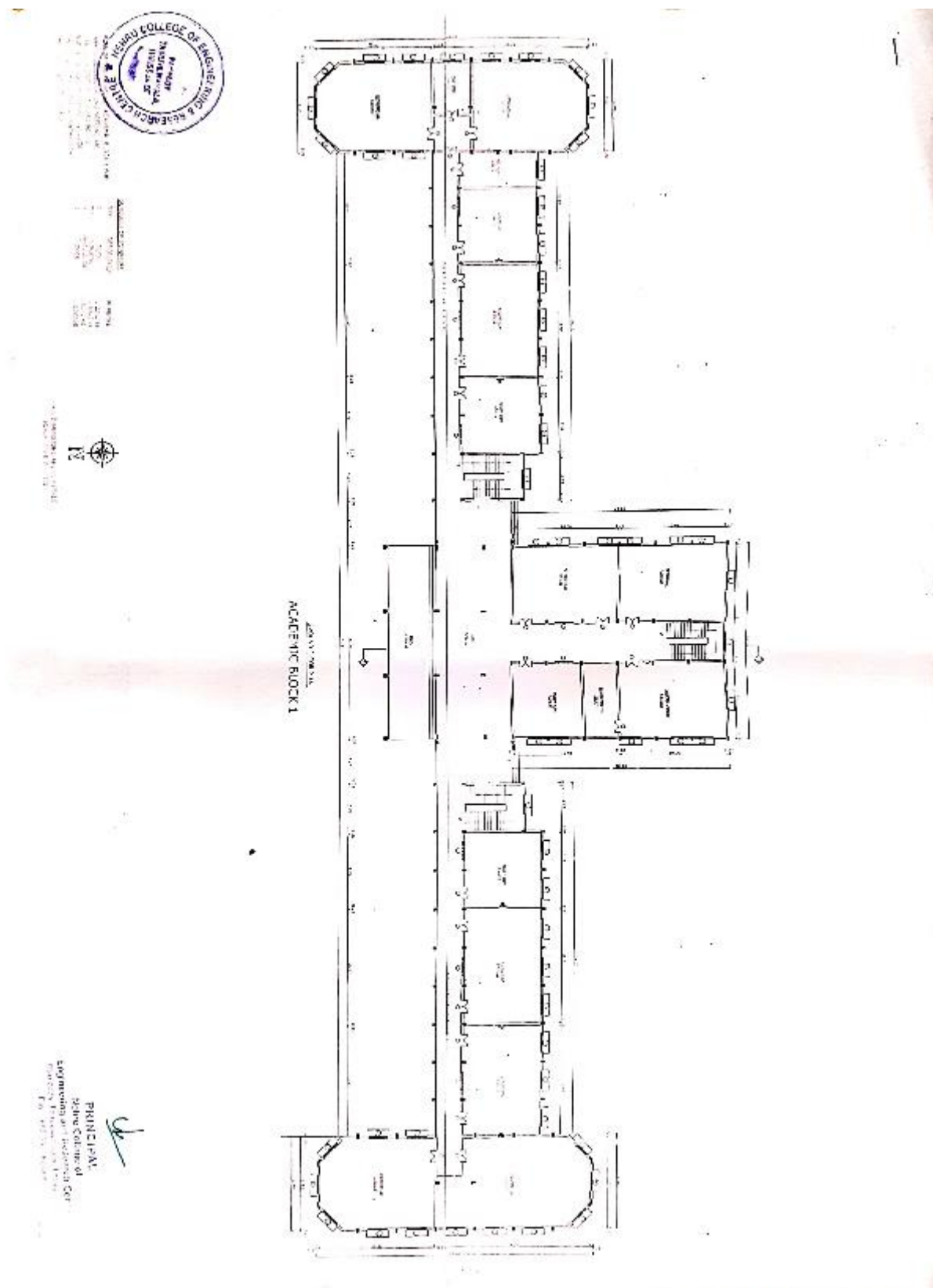
Building Plan

Nehru College of Engineering and Research Centre follows the norms laid down by AICTE and APJ Abdul Kalam Technological University for creating and enhancing the infrastructure facilities for effective teaching and learning. The Institute has sufficient classrooms (55-Nos), seminar-halls (6-Nos), various laboratories, library with ILMS, and 64 MBps internet facility including Wi-Fi. The entire ambience of the college is clean and fresh. All the infrastructure facilities are provided with a vision to help students to develop their academics and career progression skills. The Institute's policy consists of ensuring optimum utilization of the space and infrastructures to achieve best outcome. Total area of our institution is 26228 Sq. Mts. The available physical infrastructure is optimally utilized beyond regular college hours, to conduct certificate courses, co-curricular activities/extra-curricular activities, parent's teachers meeting, Campus Recruitment training classes, campus recruitments, seminars, conferences etc.

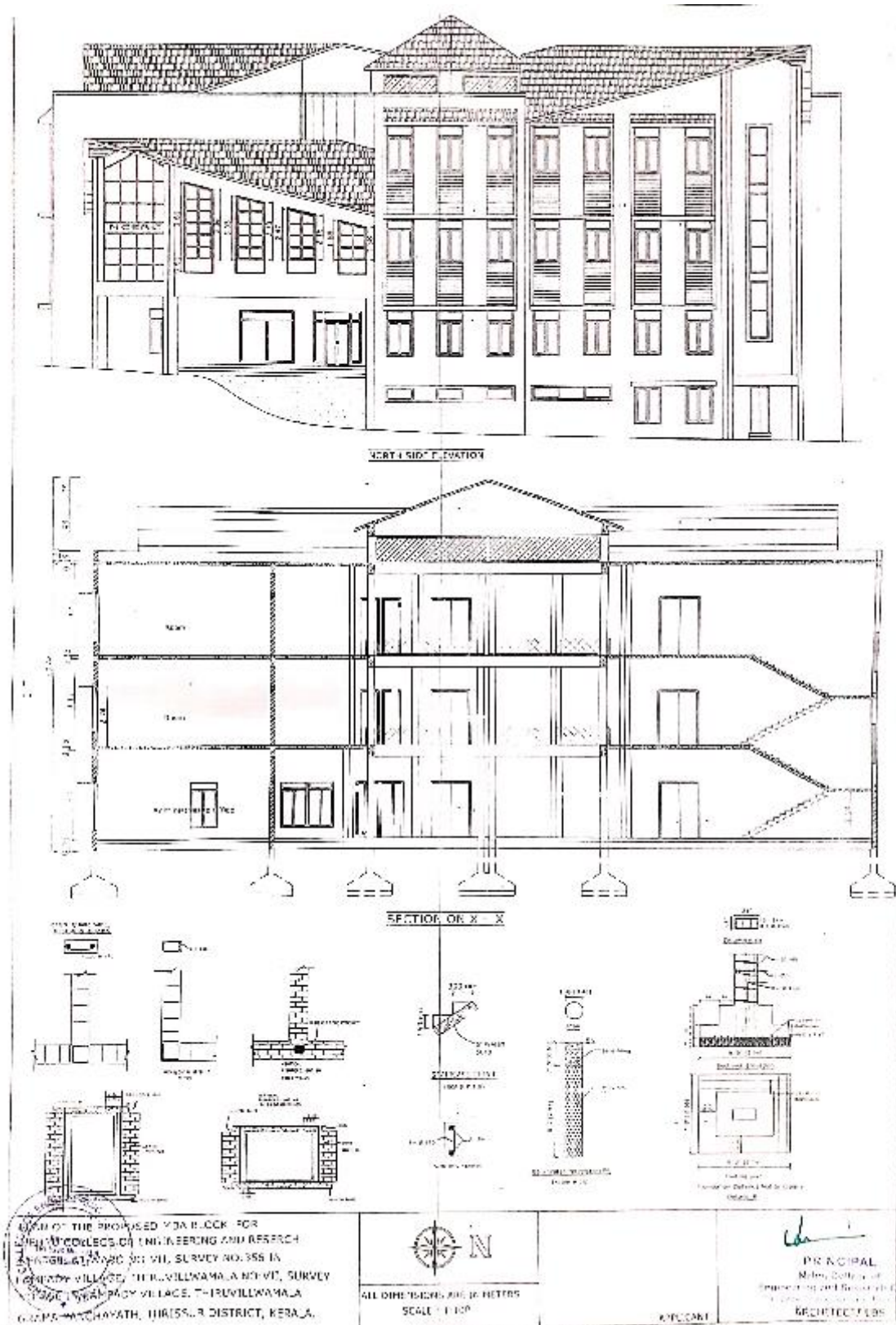
Aryabhata Block



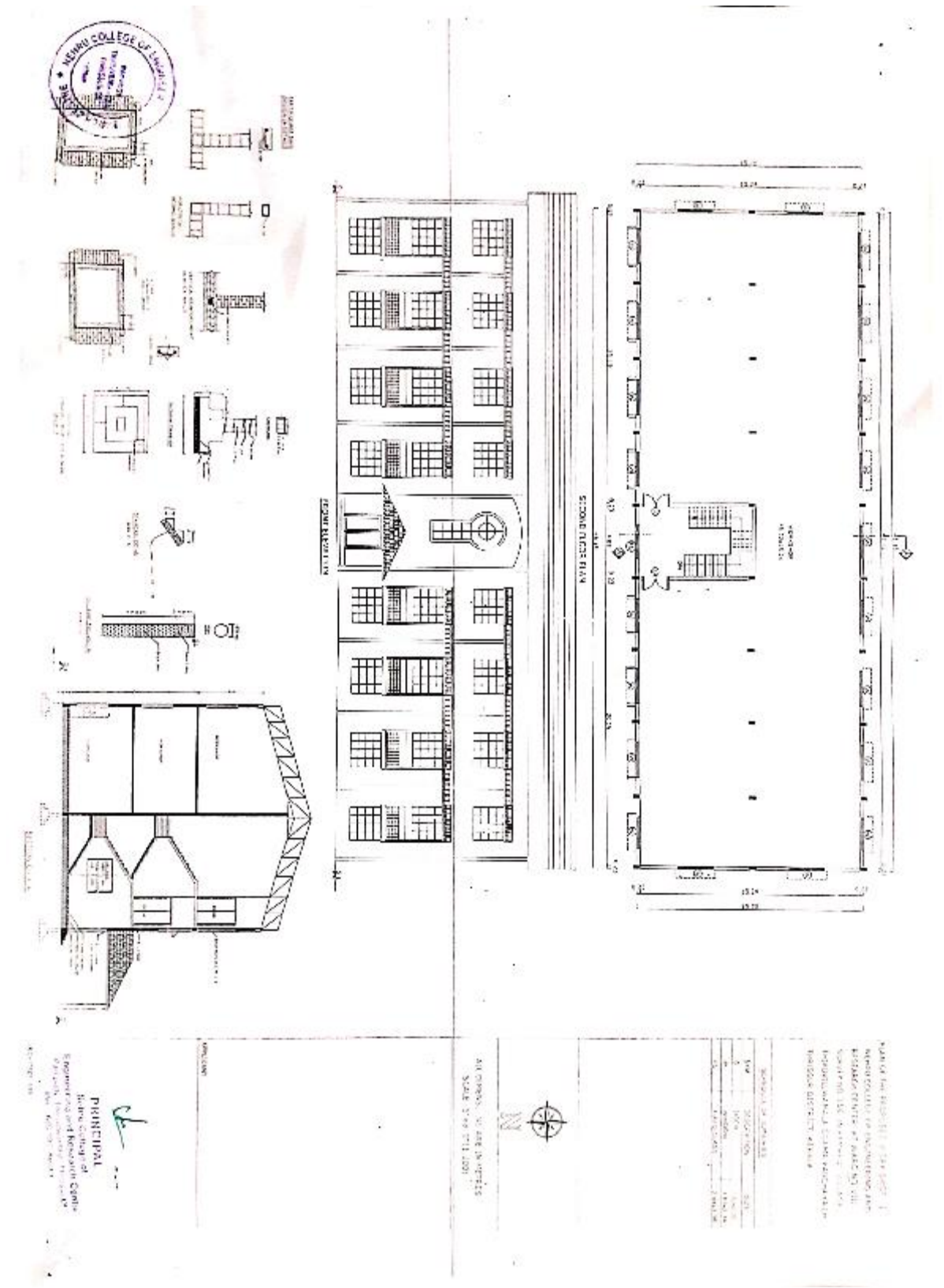
Bhaskara Block

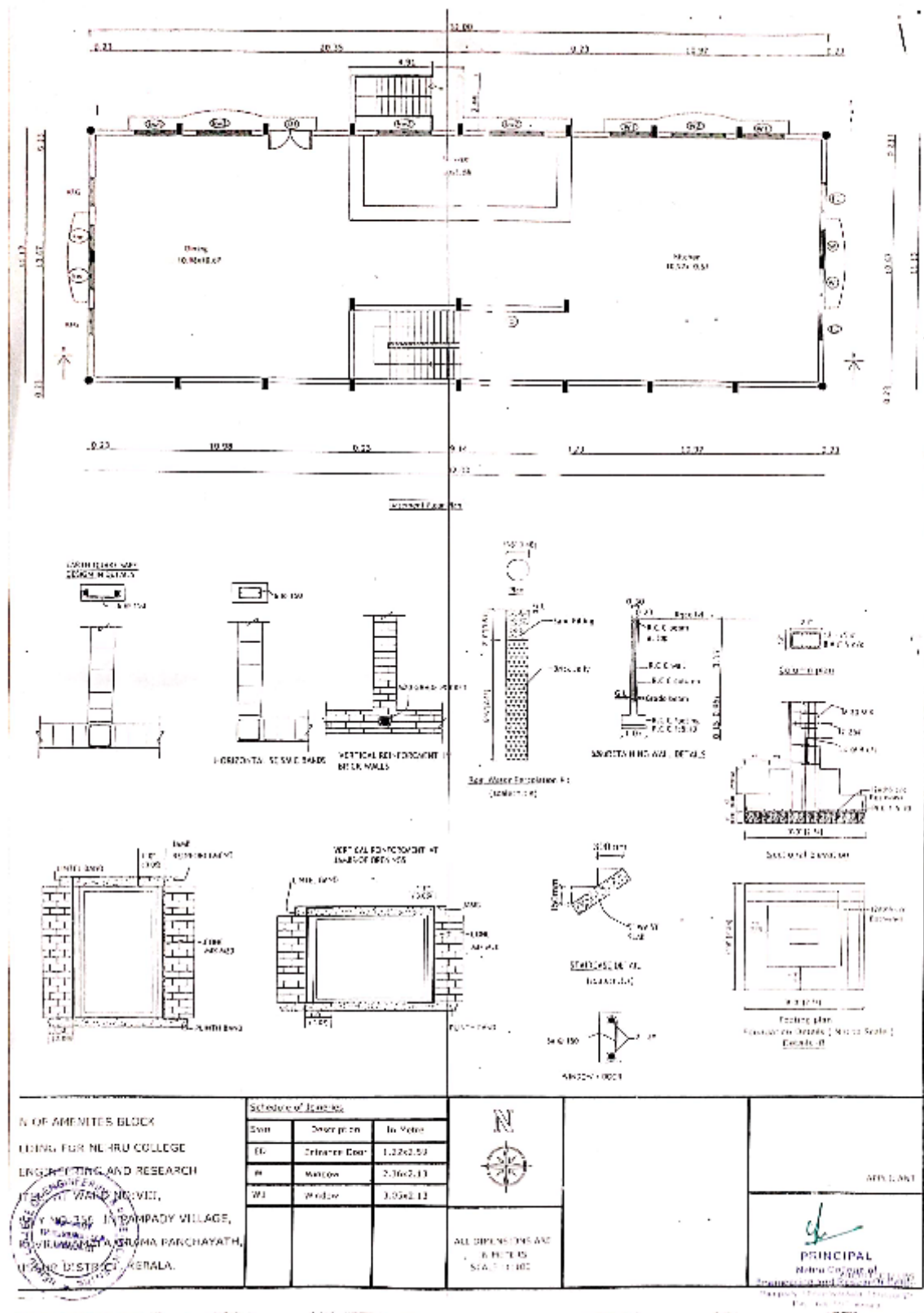


Kapila Block

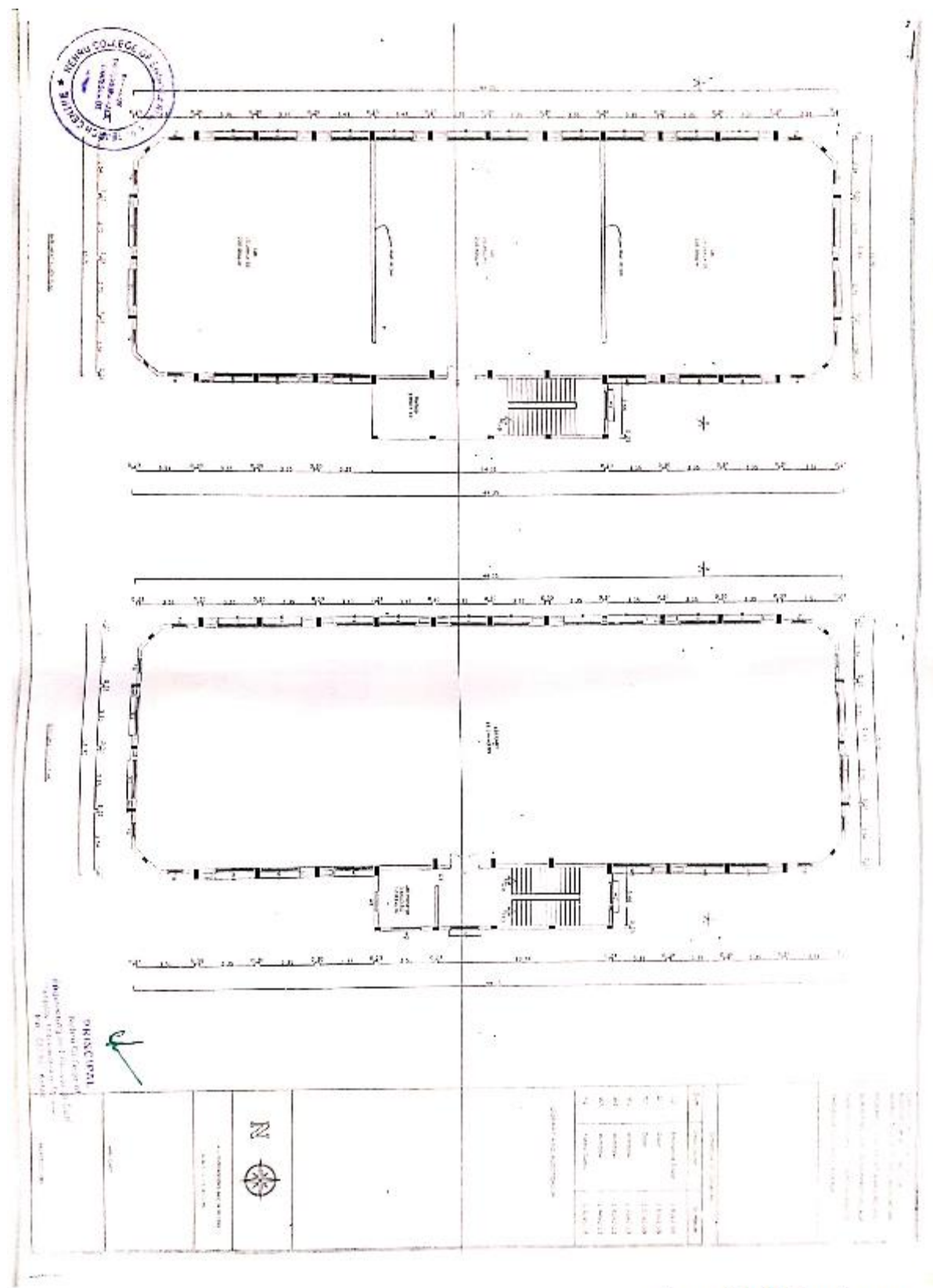


Varahamihira Block





Brahmagupta Block



Academic Blocks

The Academic Blocks (ARYABHATTA & BHASKARA blocks) of NCERC provides requirements of lecture rooms, tutorial rooms, staff offices and offices for the head of the departments. The Academic Block consists of Lecture theatres, Tutorial rooms and separate cabins for each faculty. The magnificent KAPILA Block has computer laboratories, lectures theatres, tutorial rooms, faculty cabins, office of the Director and the Board Room. This block has infrastructural facilities to cater to the academic activities of MBA and MCA.

Aryabhata

‘Aryabhata’ named after the famous astronomer ‘Aryabhata’, is a hexagonal six storied academic building, having a built up area of 1.25 lakhs sq. ft. It houses 5 U.G and P.G. departments, Principal’s office, academic office, conference room, board room, cabins of faculty, seminar hall, Placement Office, computer laboratories and tutorial rooms.



Bhaskara

The first academic block with a built up area of one lakh sq. ft. is named after Bhaskaracharya, a genius in Algebra. This building houses the boardroom, conference room, faculty cabins, tutorial rooms, first year classrooms, electronics laboratories, computer science laboratories, language lab, drawing halls, gymnasium, billiards room and the store. The departments of Civil engineering and Applied Sciences and Humanities also operate from here.



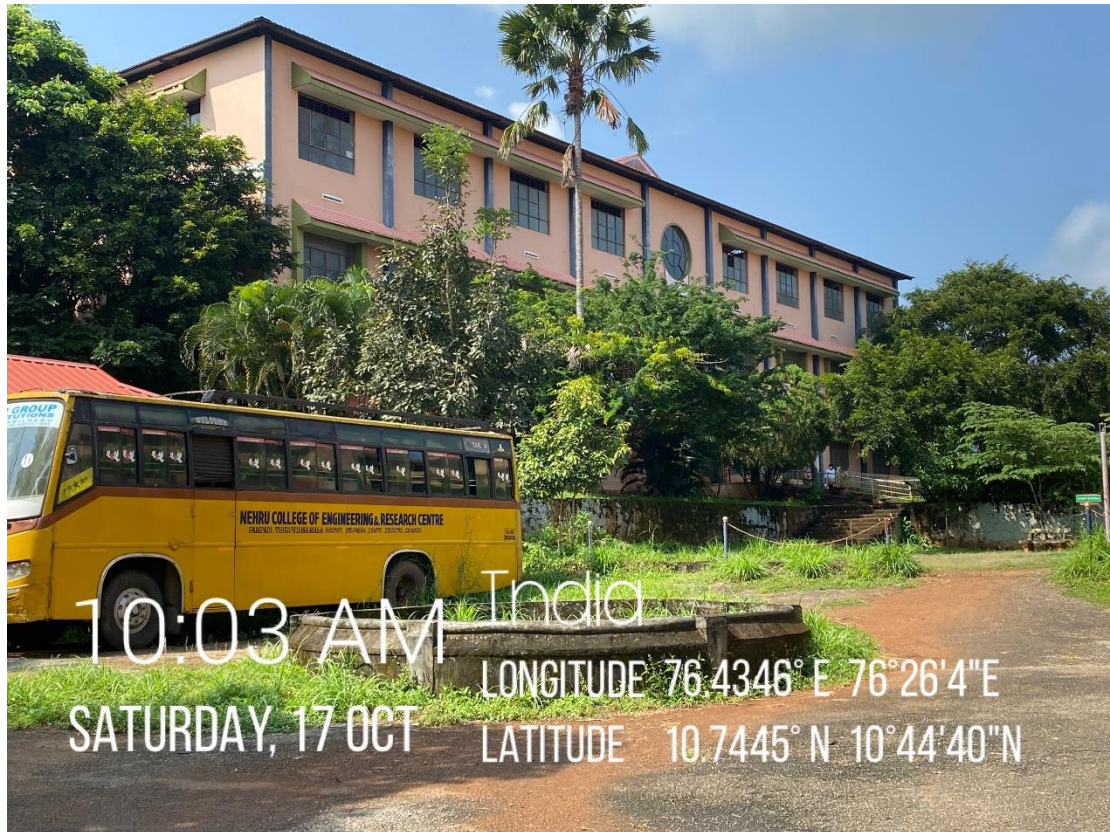
Kapila

This block, named after Kapila, who is known as the Father of cosmology and the founder of Sankhya Philosophy has an area of 60.000 sq. ft. This block houses MBA & MCA Departments, boardroom, tutorial rooms, faculty cabins, classrooms, seminar halls, PG library, and yoga hall and computer laboratories.



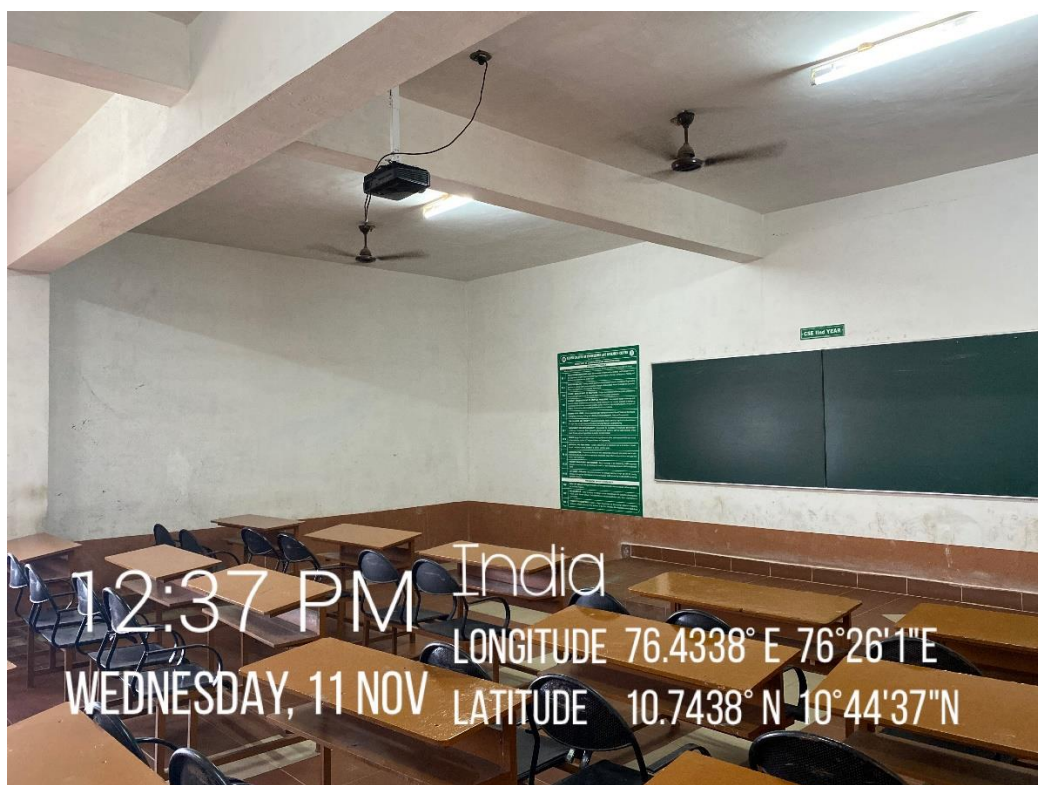
Varahamihira

This building, named after the eminent astrologer and astronomer, 'Varahmihira' houses a workshop with an area of 30000 sq.ft. is the main workshop building with ten laboratories, workshops of Mechanical Engineering Department, six laboratories of Automobile Engineering Department and four Laboratories of Electrical Engineering Department.



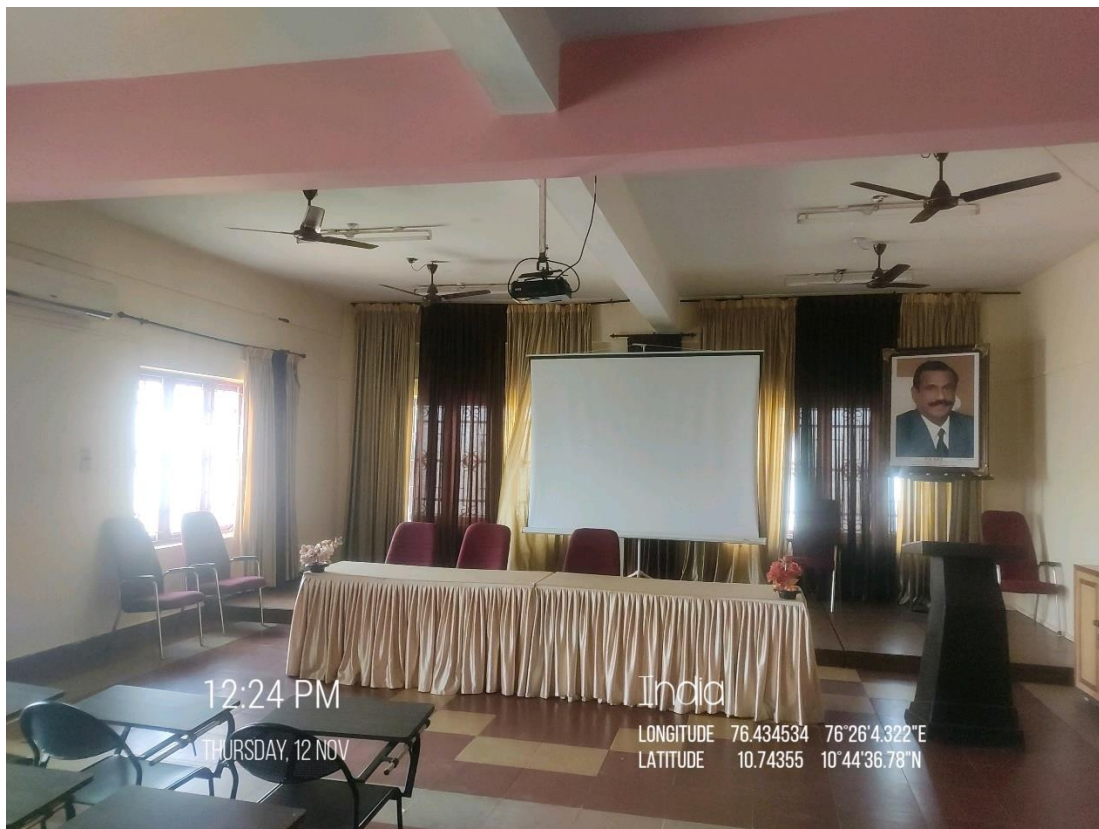
Classrooms

NCERC is equipped with more than 55 classrooms, which are well furnished & with ICT facilities like 64MBps Wi-Fi connection, projector & public address system. Each class is displayed with the individual department vision & mission, which will guide students to achieve their goals. Further, every Department is equipped with their own computing resources as well as departmental library.



Seminar Halls

The Institute has sufficient seminar-halls (6-Nos) with 64 MBps internet facility including Wi-Fi, public address system, projector & other essential facilities which facilitates in conducting International & National conferences/seminars & other activities. All the infrastructure facilities are provided with a vision to help students to develop their academics and career progression skills.



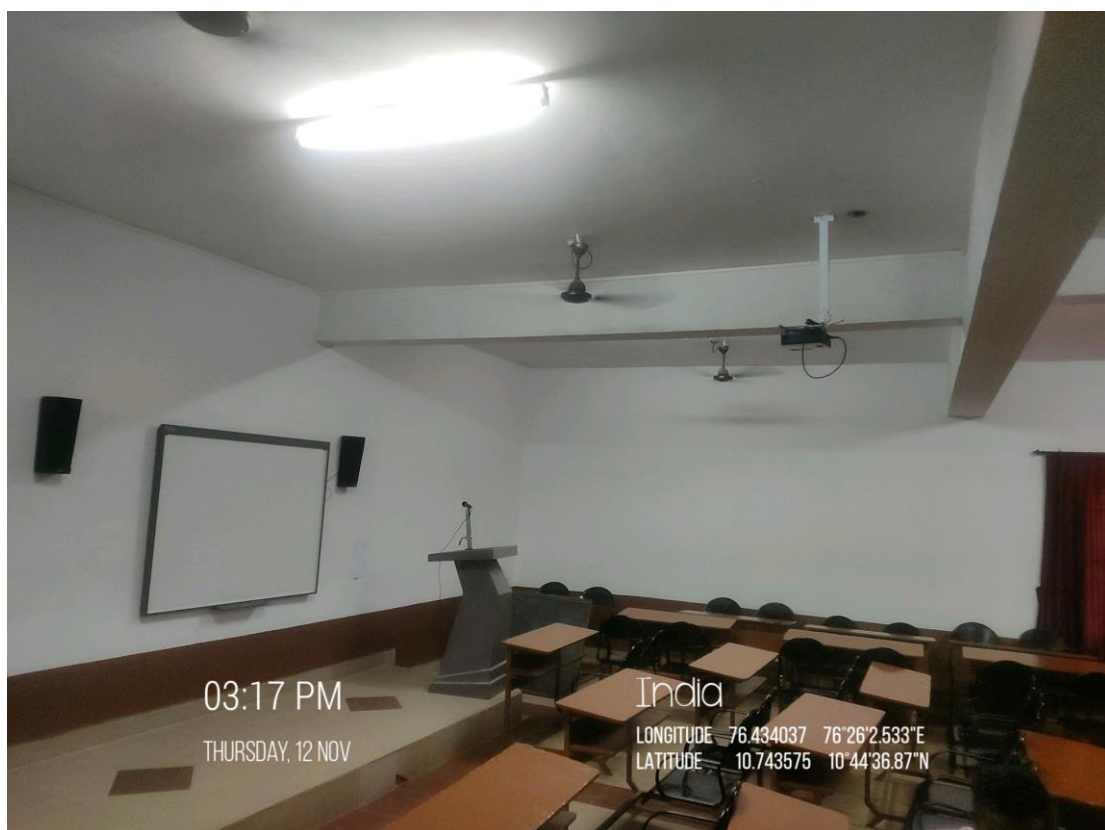
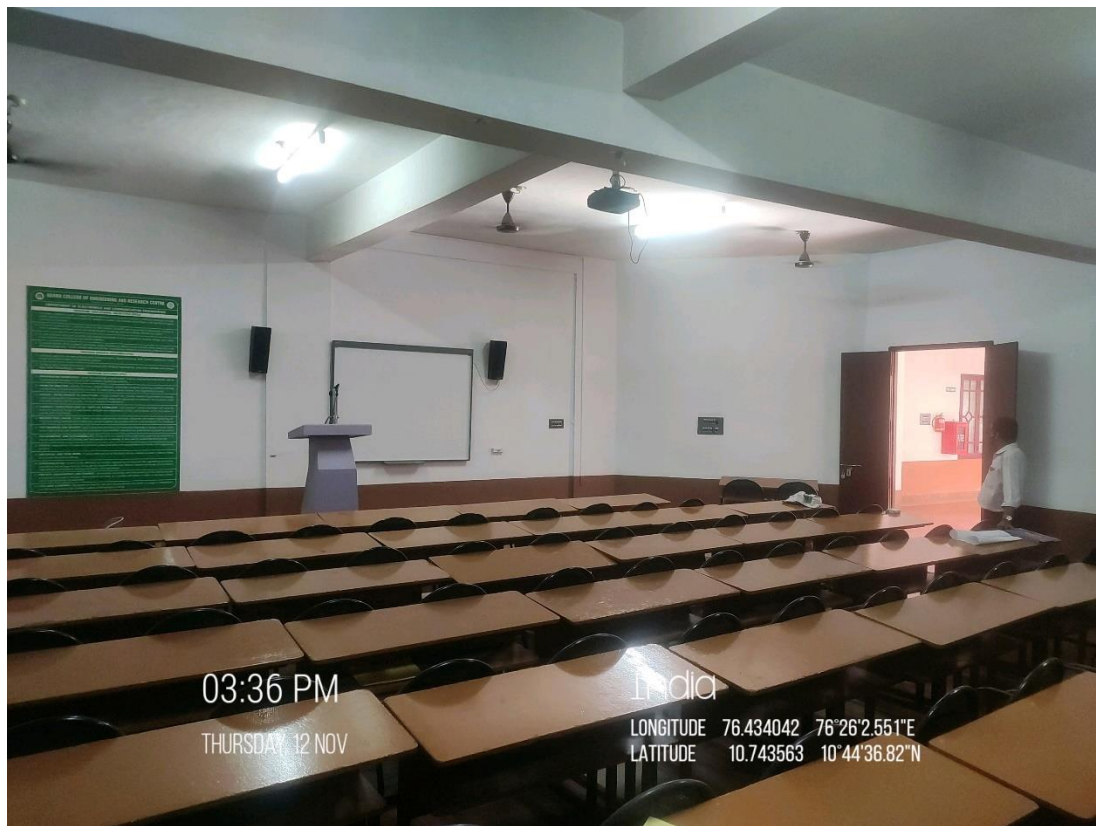
Laboratories

All laboratories in the institution are provided with advanced equipment with will help students apply their theoretical knowledge & develop their practical skills that will make them more employable in the industry.



Smart Classrooms

NCERC is equipped with 6 Smart Classrooms that are well furnished with fully functional smartboards, 64MBps internet facility, personal address system & much more.



Central Library

The central library with all its facilities has become a centre for acquiring knowledge developing skills and getting exposure to newer fields of study and research, in addition to being "connected" to the outside world through the Internet. The college has a central independent library with plinth area 9000 sq.ft with all modern facilities. The library to cater to the needs of faculty members and students with access to books and journals.

